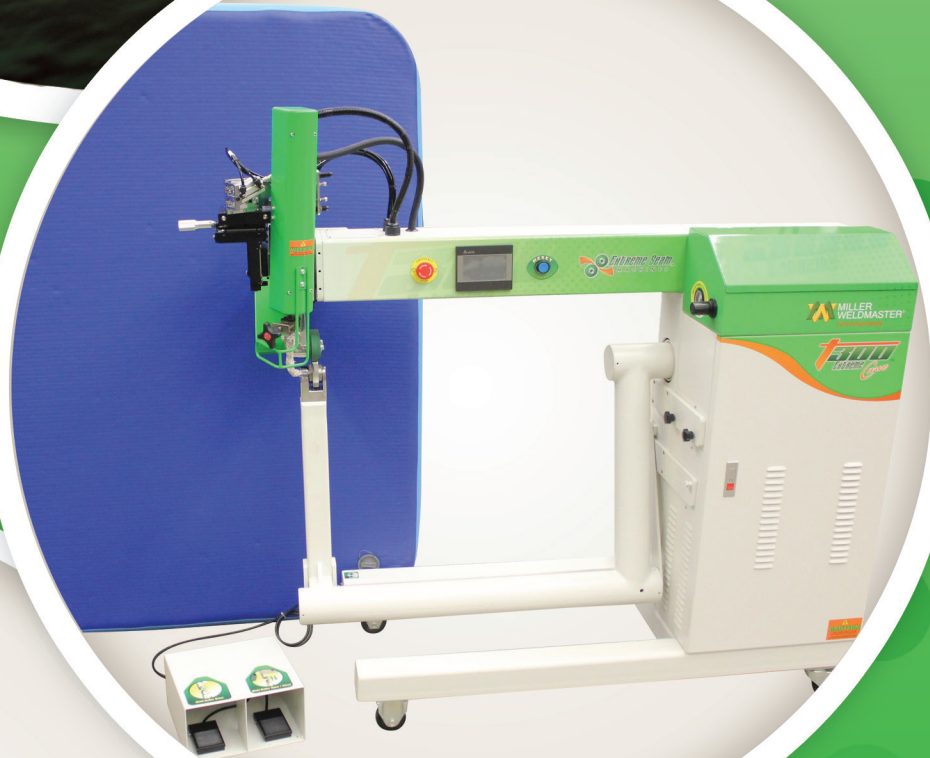


Welding **DROPSTITCH**

T300
Extreme

- ✓ *Eliminate use of glue*
- ✓ *Produce airtight and watertight seams*
- ✓ *Increase production time*



 **MILLER
WELDMASTER®**
The First Choice Globally

www.weldmaster.com/dropstitch

4220 Alabama Ave | Navarre | Ohio | 44662 | USA
330 -833-6739 | sales@weldmaster.com

Drop Stitch Welding Solution

T300
Extreme

Drop Stitch can be welded on a Miller Weldmaster T300 Extreme in a few steps:

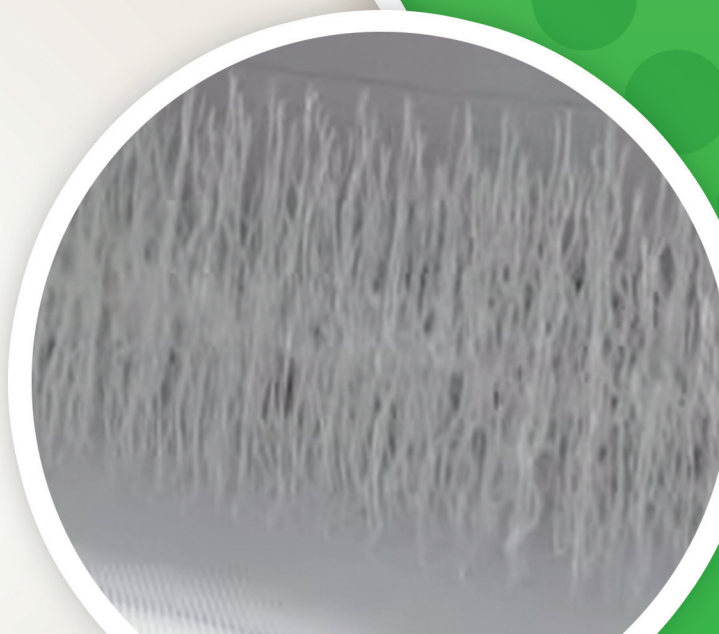
- Step 1: Align top and bottom panels**
- Step 2: Mark your pattern**
- Step 3: Clamp and cut pattern**
- Step 4: Weld**

Products produced using drop stitch include: paddle boards, inflatable boat bottoms, athletic mats, and more...



What is Drop Stitch?

- ✓ **Vertical fibers of uniform length that connect the upper and lower panels.**
- ✓ **Distance of fibers can vary**
- ✓ **Panels are covered with polymer coatings to form air tight cavity**
- ✓ **When inflated they transform into a strong, hard surface**



www.weldmaster.com/dropstitch